

The Diamond Series 9380

Single Hung Single Tilt
Thermally Broken Window

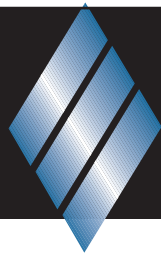


Since 1946



Series 9380 Features

- Inside Vinyl Glazing for Lasting Durability
- Extruded Vinyl Balance Cover Reduces Dust
- Tilt In Sash for Easy Cleaning
- Durable Fin-Seal Weatherstripping
- Combination Stop and Slope Sill
- Custom 13° Bow, 45° Bay and 180° Mullions
- Electrostatically Applied Paint
- Many Energy Saving Glass Options Available
- 5/8" Overall Glazing
- Adjustable Spiral Sash Balances
- Lifetime Warranty
- AAMA Certified DH-650



Diamond, the #1 Window in Customer Satisfaction

9380 Single Hung Windows Size & Lite Chart



Meets egress code of
4.7



Meets egress code of
5.0



Meets egress code of
5.7 or better

Screen Size	Top Glass								
	14 5/16"	20 5/16"	24 5/16"	28 5/16"	32 5/16"	38 5/16"	40 5/16"	44 5/16"	48 5/16"
Glass Size	Bottom Glass								
	14 1/8"	20 1/8"	24 1/8"	28 1/8"	32 1/8"	38 1/8"	40 1/8"	44 1/8"	48 1/8"
Unit Dimensions	Unit Dimension								
	17 5/8"	23 5/8"	27 5/8"	31 5/8"	35 5/8"	39 5/8"	43 5/8"	47 5/8"	51 5/8"
13 3/8"	1824	2024	2424	2624	2824	3024	3424	3824	4024
17 3/8"	1630	2030	2430	2630	2830	3030	3430	3830	4030
21 3/8"	1638	2038	2438	2638	2838	3038	3438	3838	4038
23 3/8"	1640	2040	2440	2640	2840	3040	3440	3840	4040
25 3/8"	1644	2044	2444	2644	2844	3044	3444	3844	4044
29 3/8"	1650	2050	2450	2650	2850	3050	3450	3850	4050
29 3/8"	1660	2060	2460	2660	2860	3060	3460	3860	4060
29 3/8"	1670	2070	2470	2670	2870	3070	3470	3870	4070
29 3/8"	1680	2080	2480	2680	2880	3080	3480	3880	4080

- Lite Divisions Illustrated by Internal Lines are Optional.
- A 5-0 Sash is Standard on All 6-0, 7-0, & 8-0 High Windows.
- All Others Will Have Equal Sash Standards.
- Half Screen Sizes Shown
- Rough Opening Sizes are the Same as Call Out Window Sizes.

Series 9780 Picture Window Size & Lite Chart

Glass Size	9 1/4"	21 1/4"	29 1/4"	33 1/4"	45 1/4"	57 1/4"	69 1/4"	Unit Dimension
	11 5/8"	23 5/8"	31 5/8"	35 5/8"	47 5/8"	59 5/8"	71 5/8"	Unit Dimension
45 1/4"	2040	2840	3040	4040	5040	6040		
57 1/2"	1050	2050	2850	3050	4050	5050	6050	
69 1/4"	1060	2060	2860	3060	4060	5060	6060	

• Rough Opening Sizes are the Same as Call Out Window Sizes.

Glass Size	Class Size		
	Unit Dimension		
45 7/8"	4040	4050	5040
	1060	1660	2666
	4066	30710	40710

Tempered Picture Windows Only
Rough Opening Sizes Are Call Out Size + 1/2"

Diamond, the #1 Window for Quality, Affordability and Low Maintenance.

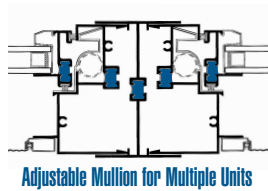
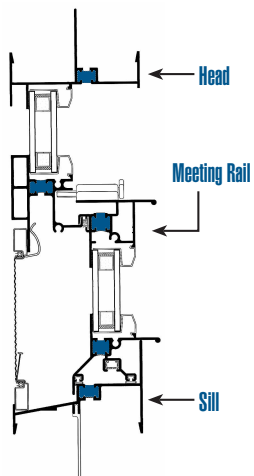
Matching Specialty Windows



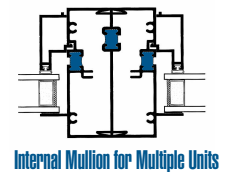
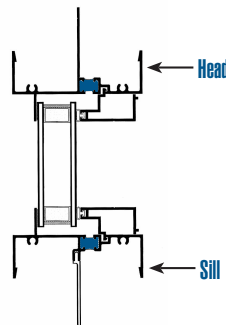
AAMA Ratings of Windows Manufactured by Public Supply

Series	AAMA Rating
Aluminum Windows	
180 Single Hung	DH-C35
1580 Single Hung	DH-C30
1480 Horizontal Slider	HS-C20
1980 Single Hung	DH-C30
Aluminum Thermal Break Windows	
280 Single Hung	DH-C30
9380 Single Hung	DH-C50
3980 Single Hung	DH-C50
9480 Horizontal Slider	HS-C35
Vinyl Windows	
3280 Single Hung-Tilt	DH-R25
4280 Single Hung-Tilt	DH-R25
3280 Single Hung-Take out	DH-C35
4280 Single Hung-Take out	DH-C35
3480 Horizontal Slider	HS-C20
5280 Double Hung	DH-R20
6280 Double Hung	DH-R20
4480 Horizontal Slider	HS-C20
3780 Picture Window	F-C60
4780 Picture Window	F-C60
Patio Doors	
3180 Sliding Door - Vinyl	SGD-R30
2080 Sliding Door - Aluminum	SGD-R25

9380 DH-C50 Window Details



9780 Window Details



MULTIWINDOWS
Single Hung & Picture Window

Formula Using Adjustable Mull

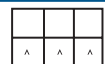
Twins: C.O.S. x 2 + 1/2"

Example: 2 x 3 Twin =
24" x 2 = 48" + 1/2" =



Triples: C.O.S. x 3 + 1"

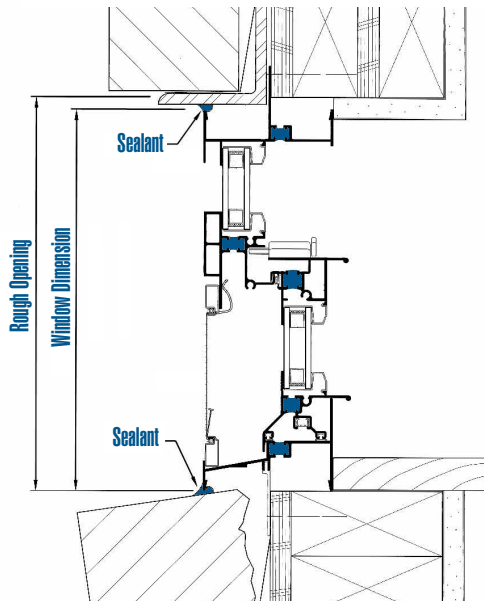
Example: 2 x 3 Triple =
24" x 3 = 72" + 1" = R.O.



C.O.S.=Call Out Size

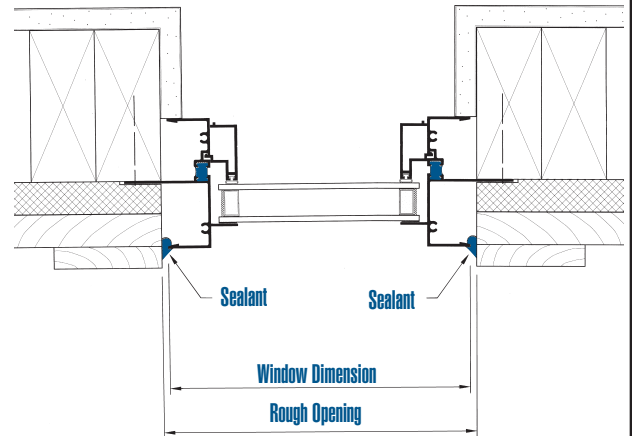
Series 9380 Installation Details

Brick Vertical



Series 9780 Installation Details

Wood Horizontal



Series 9380-HP Single-Hung, Single Tilt & Series 9780 Fixed Window (Thermal Window) Specifications

GENERAL: Thermal-break aluminum windows in this specification shall be the Diamond Series 9380-HP and 9780 as manufactured by Public Supply Company of Oklahoma City and conform to requirements of AAMA 101.85 performance class for DH- C50 Single Hung, Single Tilt Windows and requirements of Series 9780 fixed windows.

MATERIALS: Frame and sash shall be of commercial quality 6063-T5 extruded aluminum within AAMA specifications for commercial tolerances. Thermally broken frame and sash members utilize high density, low thermal conductivity poured polyurethane thermal material, and shall structurally combine inner and outer frame and sash sections. When window is in closed position, operating sash shall be sealed with Fin-Seal at interlock and at sash stiles and have double, non-elongating bulb vinyl at the bottom. Adjustable spiral balances shall be installed to hold operating sash stationary allowing sash to tilt inward for cleaning or removal from interior.

GLAZING: Window units shall be factory glazed to meet or exceed AAMA wind load requirements. All operating windows shall be glazed 5/8" overall thickness from inside with extruded vinyl glazing bead. Fixed aluminum windows are designed to accept 7/8" overall thickness with interior extruded aluminum glazing bead.

CONSTRUCTION: Frame and sash members assembled with high standards of performance to utilize strength of all sections so that the product performs according to AAMA-DH-C50 specifications to assure neat, weathertight construction.

FINISH: Finish material shall be thermosetting polyester enamel electrostatically applied in accordance with AAMA specifications 603.8.

SCREENS: Screens furnished when specified. Frame shall be roll-formed aluminum with fiberglass mesh contained by removable spline. Aluminum mesh available.

NOTE: Screens designed for reasonable insect control and are not intended to provide security for the retention of persons or objects from the interior.

INSTALLATION: (By others) All windows shall be set plumb and level in a closed position without distorting the window and securely fastened in place in accordance with manufacturer's recommendations.



PUBLIC SUPPLY COMPANY
P.O. Box 60486
1236 NW 4th OKLAHOMA CITY, OK 73146 (405) 272-9621

